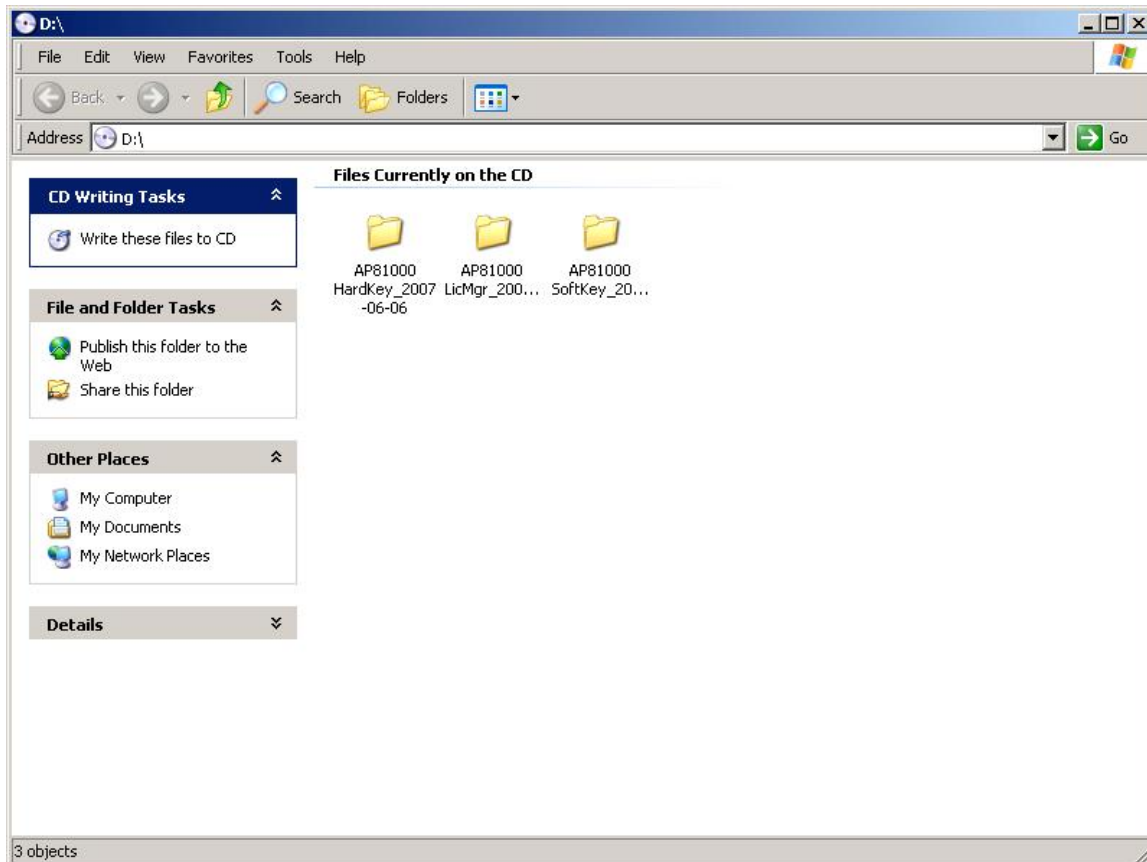


# Autolabel Designer 8 Installation Instructions

1. Install the hardware key on the computer that you will be running the Autolabel Designer 8 program on. This key may be a Parallel port key or a USB key. Please install the key into the correct port type at this time.
2. Insert the Autolabel Designer 8 CD.
3. Windows should automatically pop up a Windows Explorer window that is displaying the contents of the Autolabel Designer 8 Install CD that is in the CD ROM Drive.



4. To install Autolabel Designer 8, DOUBLE-CLICK on the correct folder for the version you are installing.

*If you are installing the hardware key locked version, then DOUBLE-CLICK on the AP81000 HardKey\_2007-06-06 Folder.*

*If you are installing the multi-user network version, then DOUBLE-CLICK on the AP81000 LicMgr\_2007-06-04 Folder.*

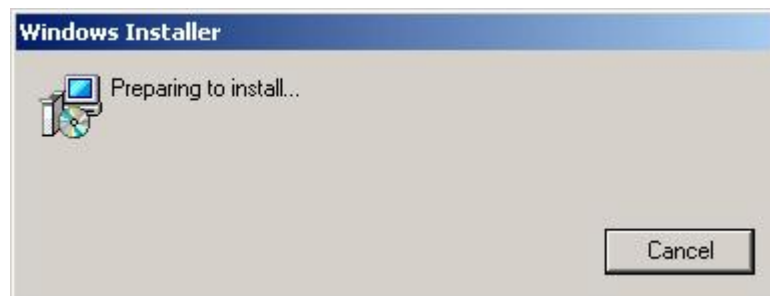
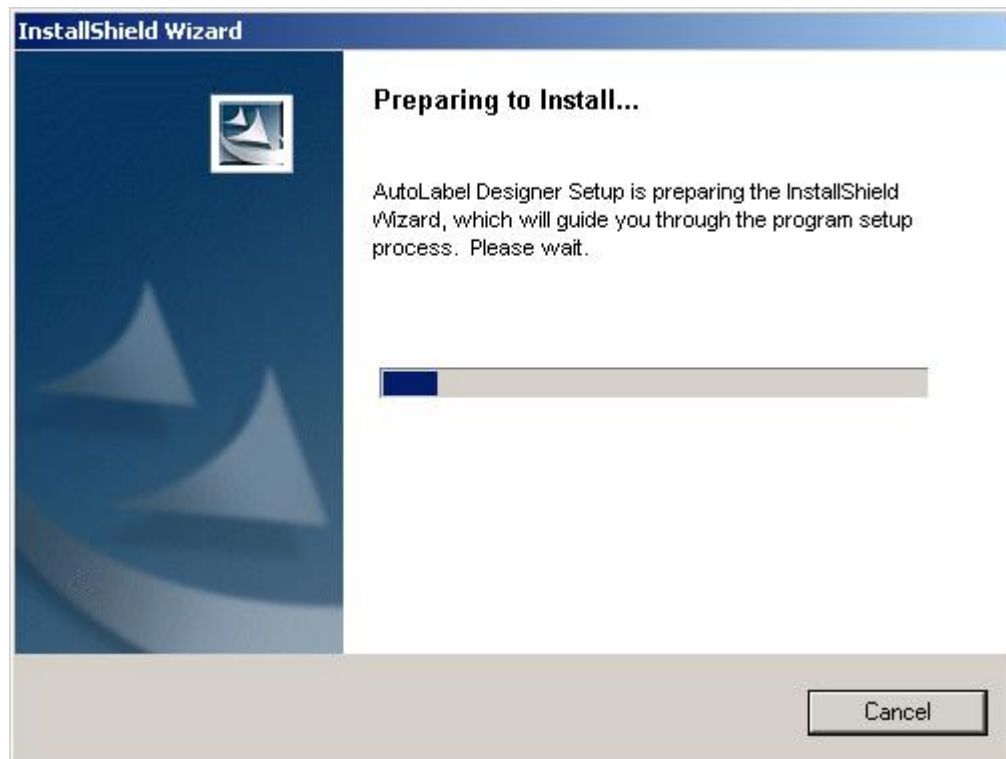
5. DOUBLE-CLICK on the **Setup.exe** file located in the chosen folder.

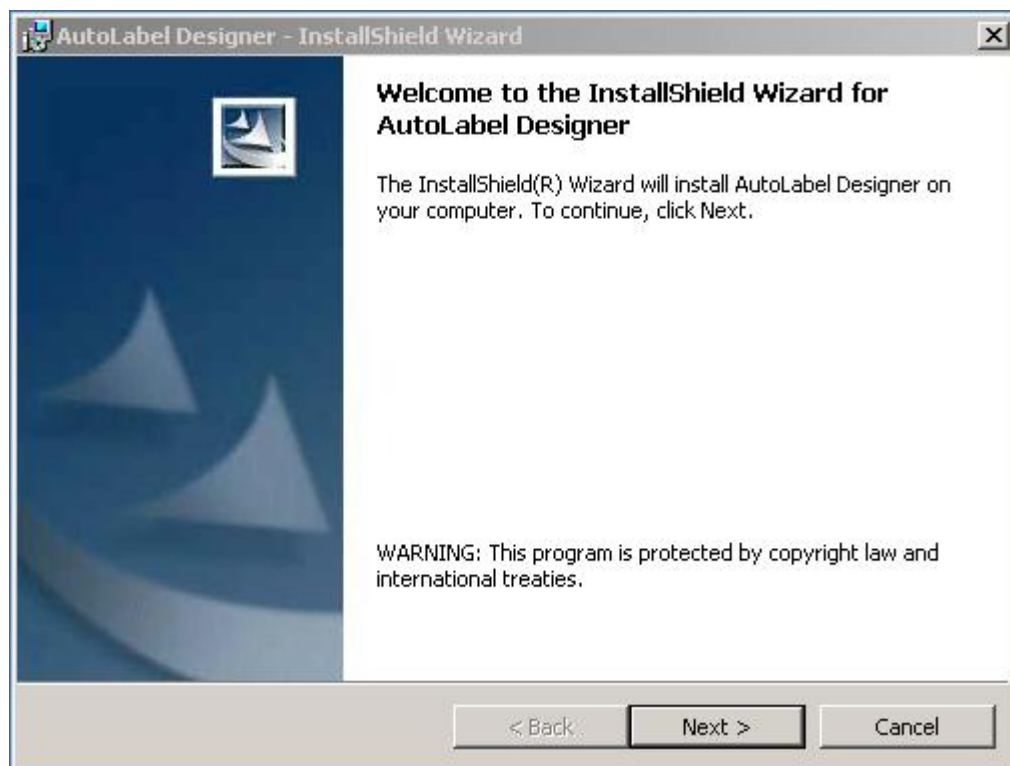


6. The following language screen will pop up. Please select the appropriate language for this installation.



7. Wait about 1 minute for the next prompt screen to appear.  
The following windows will pop-up while waiting.



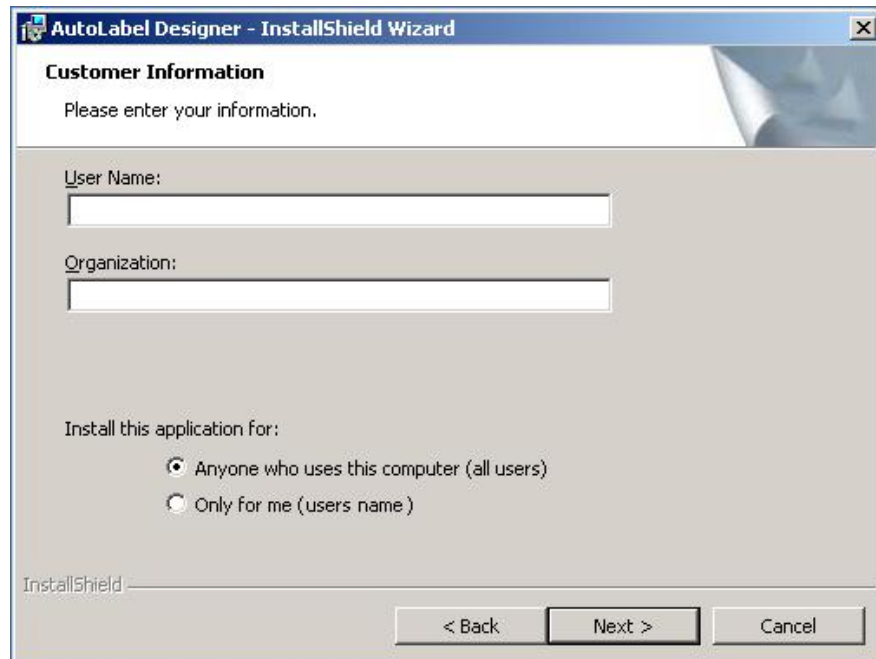


Click NEXT



Click the check block to accept or not to accept the terms of the Autolabel Designer 8 license agreement, and then click NEXT.

If you accepted the license agreement, then the next screen shown below will pop-up.




The screenshot shows a Windows-style dialog box titled "AutoLabel Designer - InstallShield Wizard". The main heading is "Customer Information" with a sub-instruction "Please enter your information." Below this are two text input fields: "User Name:" and "Organization:". Underneath these fields is a section titled "Install this application for:" containing two radio button options: "Anyone who uses this computer (all users)" (which is selected) and "Only for me (users name)". At the bottom left is the "InstallShield" logo. At the bottom right are three buttons: "< Back", "Next >", and "Cancel".

Enter your user name and organization name (Company). This information may already be entered from Windows defaults. You can change this information at this time if desired.

Select if you want to have this install be for all users or limited to only the user who is listed above.

Click NEXT to continue with the installation.

This screen allows you to change what folder and location the Autolabel Designer 8 will be loaded into.



The screenshot shows the same "AutoLabel Designer - InstallShield Wizard" dialog box, but at the "Destination Folder" step. The instruction reads "Click Next to install to this folder, or click Change to install to a different folder." Below this, there is a folder icon and the text "Install AutoLabel Designer to: C:\ALD80\". To the right of this text is a "Change..." button. At the bottom are the same three buttons: "< Back", "Next >", and "Cancel".

If you would like to install Autolabel Designer 8 in a location other than the default folder, you can click CHANGE. However, It is recommended that you install Autolabel Designer 8 into the default location.

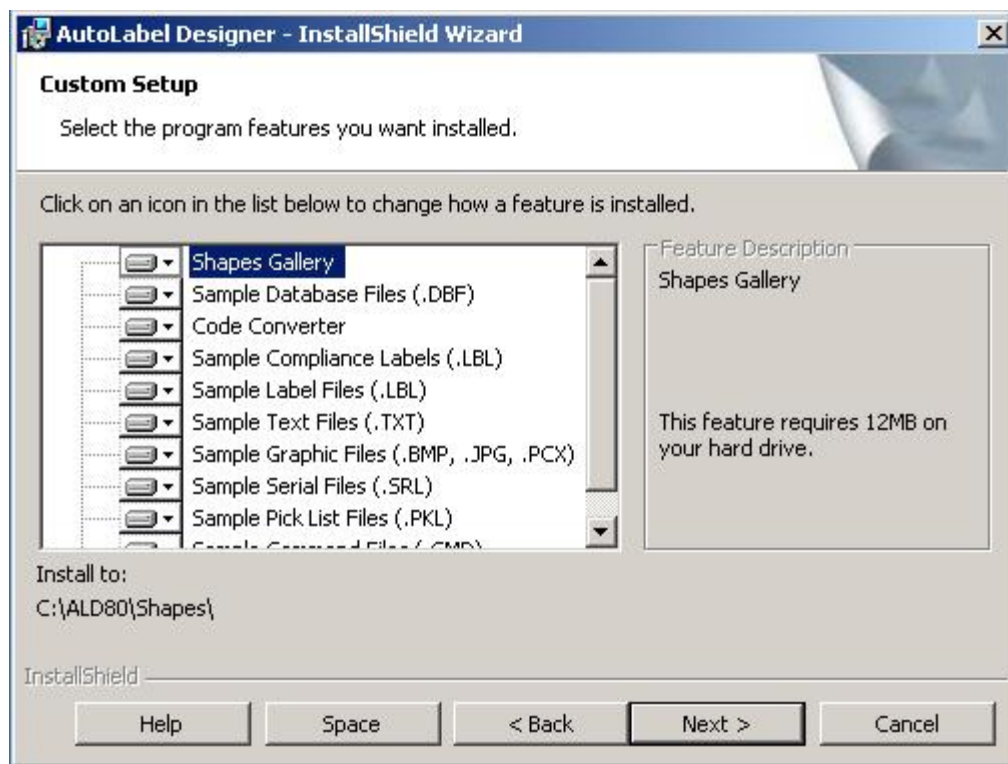
To allow Autolabel Designer 8 to install in the default location click NEXT.

This screen allows you to change the features that get installed.

Some hard drive space can be saved if the sample files are not loaded. It may be necessary to unselect some items if installing on a hard drive with limited hard drive space, such as on an older technology computer.

Click on the drive block if you wish to deselect an item from loading.

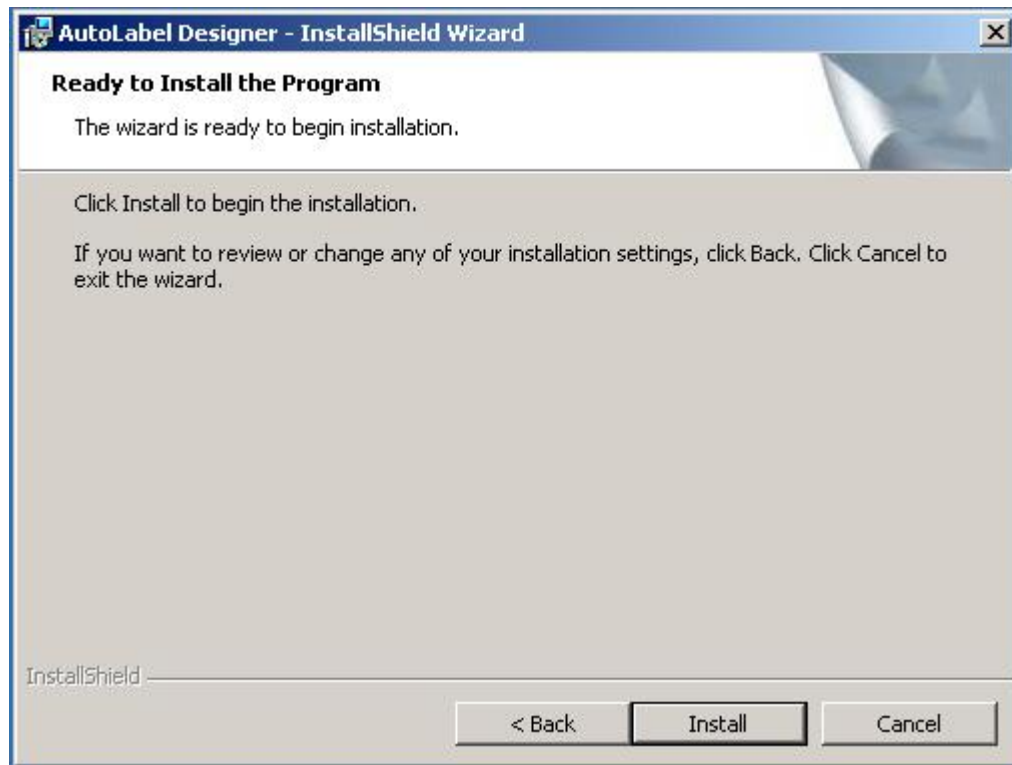
It is recommended that all the components of Autolabel Designer 8 be installed.



Click NEXT for the installation.

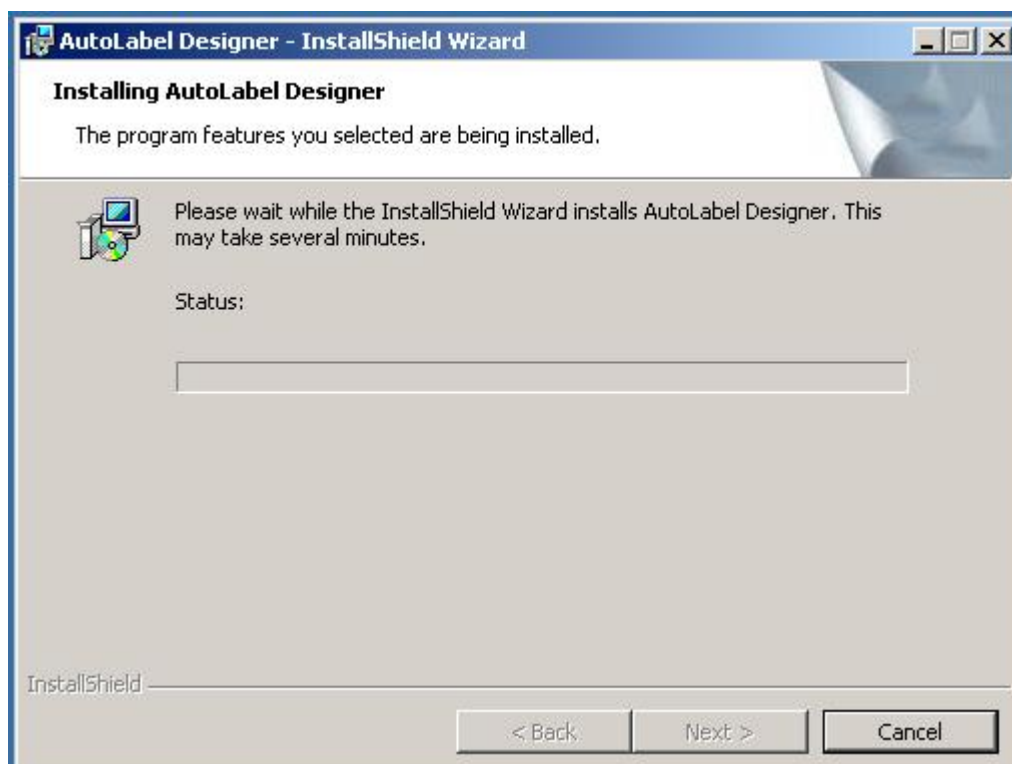
At this time, the Autolabel Designer 8 installer is setup and ready to install the program on your computer.

This is the last chance you will have to go back and change any settings.



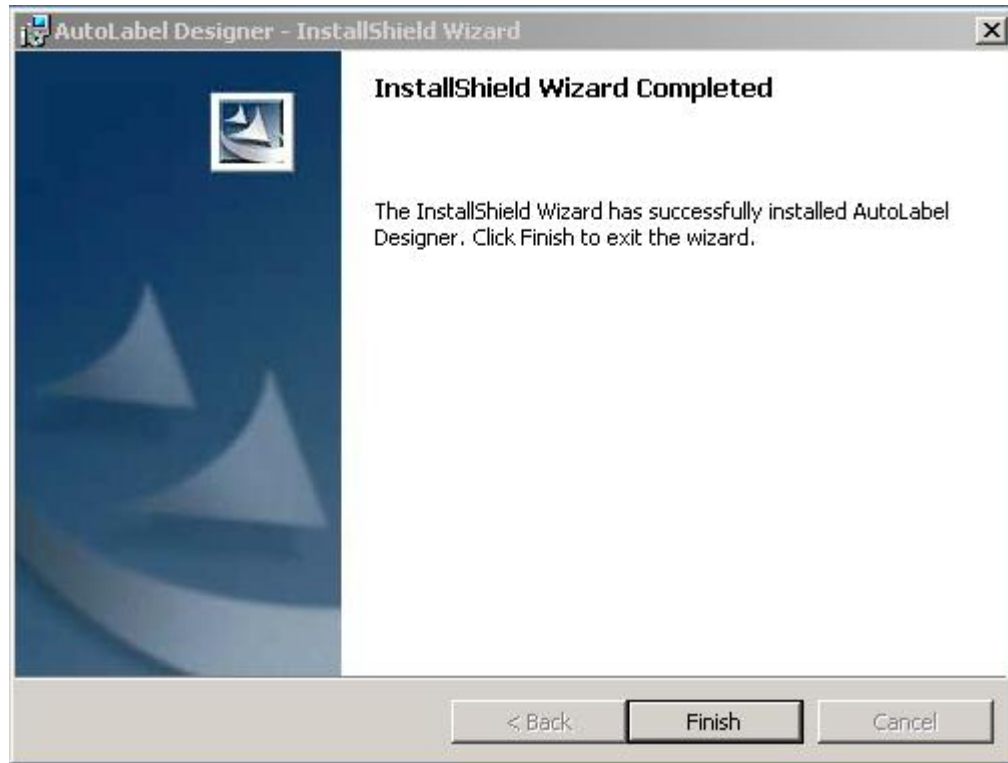
Click **INSTALL** to continue with the installation of Autolabel Designer 8.

The following screen will pop-up to display the progress of the installation process.



Allow the Autolabel Designer 8 installer to finish.

When the Autolabel Designer 8 Installer is finished, the following screen will pop-up.



Click FINISH to finalize the Autolabel Designer 8 installation.

At this time, Autolabel Designer 8 is installed on your computer.

## PUTTING THE AUTOLABEL DESIGNER 8 ICON ON YOUR DESKTOP.

Autolabel Designer 8 will not automatically place an Icon on the Windows Desktop. Having an icon on the desktop will make it easier for inexperienced as well as experienced computer users to access the Autolabel Designer 8 program.

To place an Icon on the Windows Desktop follow these few quick steps:

LEFT-CLICK on the Windows START button in the Windows taskbar.

LEFT-CLICK on PROGRAMS in the Windows START MENU.

Find the AUTOLABEL menu and position your cursor over it.

A submenu will appear with all the AUTOLABEL programs that can be selected.

Position your cursor over the AUTOLABEL DESIGNER program menu, and RIGHT-CLICK.

Position your cursor over the SEND TO menu.

A submenu will appear. Position your cursor over the DESKTOP (create shortcut) menu, and LEFT-CLICK.

The following Icon will appear on your desktop.



DOUBLE\_CLICKING this icon on your desktop will start the Autolabel Designer 8 program.



## INVOKING THE AUTOLABEL DESIGNER 8 PROGRAM.

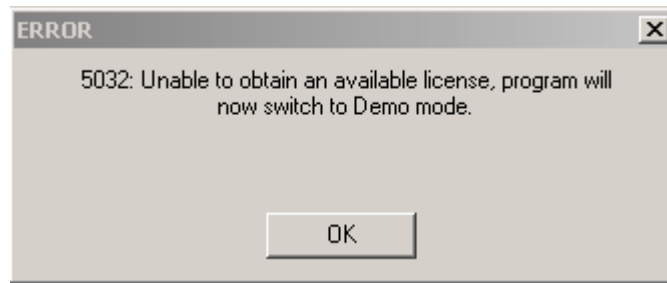
You can invoke the Autolabel Designer 8 program from the START menu, or by DOUBLE-CLICKING the Autolabel Designer 8 Icon on your desktop.



You will see the following splash screen appear.

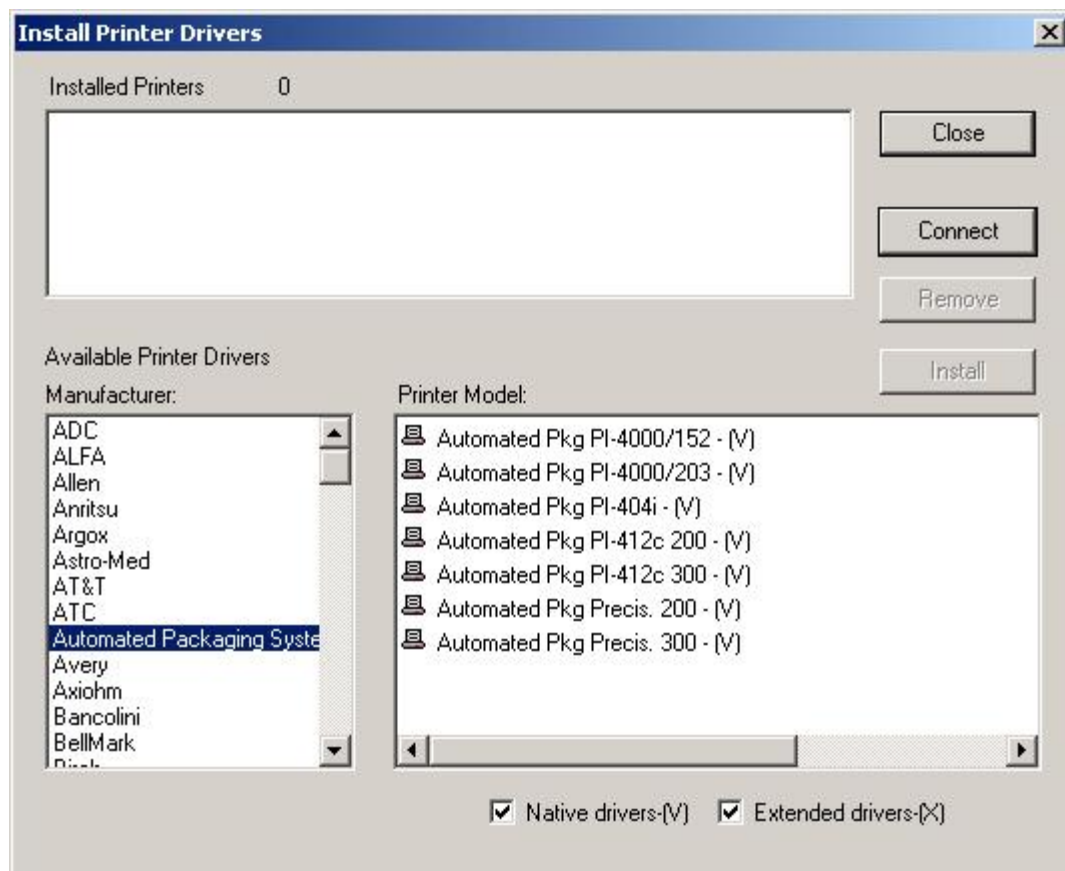


If you see the following message box appear, then the hardware key cannot be found. If the hardware key is plugged into the system you are operating from then try reseating the key. Press enter for OK, or click OK.



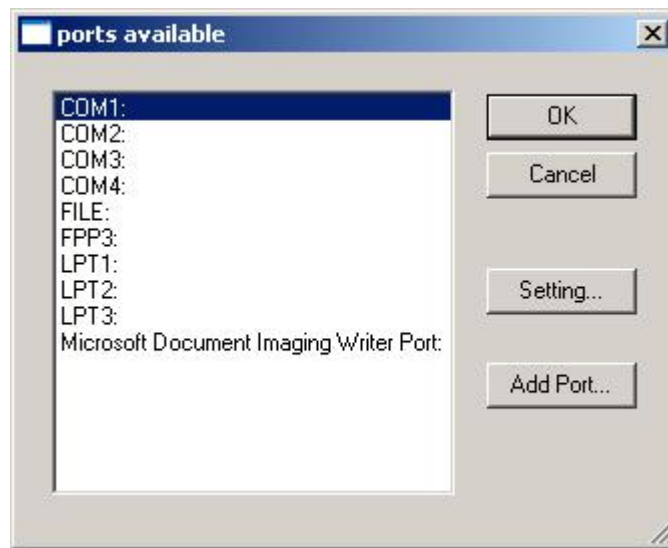
The first time Autolabel Designer 8 is run, the system will request you install a printer driver. Select your printer manufacturer.

For Automated Packaging Systems printers select Automated Packaging Systems under the Manufacturer select box, then select the correct printer model under the Printer Model select box.

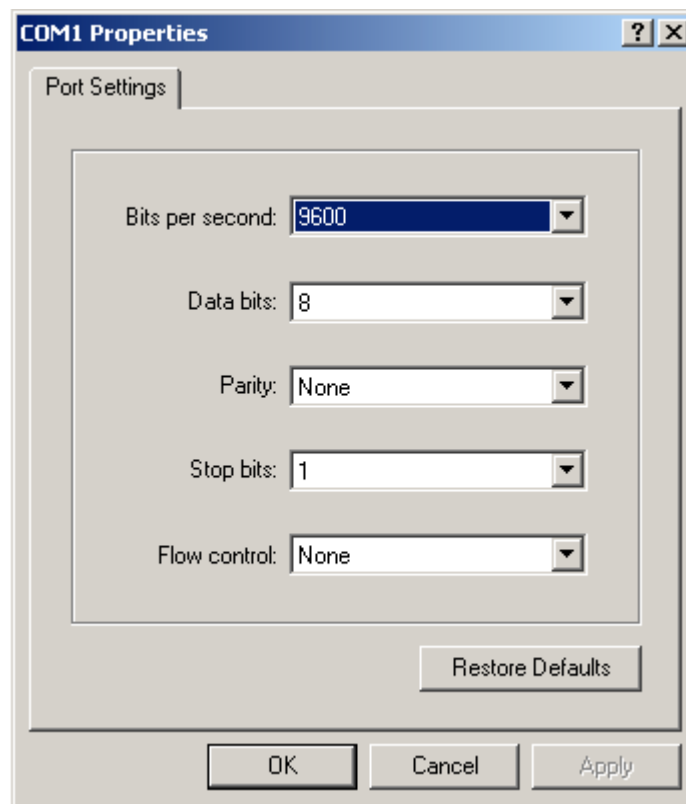


To Select the port that the printer will connect to, click the CONNECT button

Use the following menu to select what communications port will be used to connect to this computer.



If a serial COM port is selected then the Baud rate, Data bits, Parity, Stop bits, and Flow control method must be set. These settings must match those in the printer. Please see your printer manual for how to check and set those settings in your particular printer.



## SELECTION OF HARDWARE KEY ON NETWORKED COMPUTER.

If you have a network license server version of Autolabel Designer 8, you will follow all the instructions above for the installation.

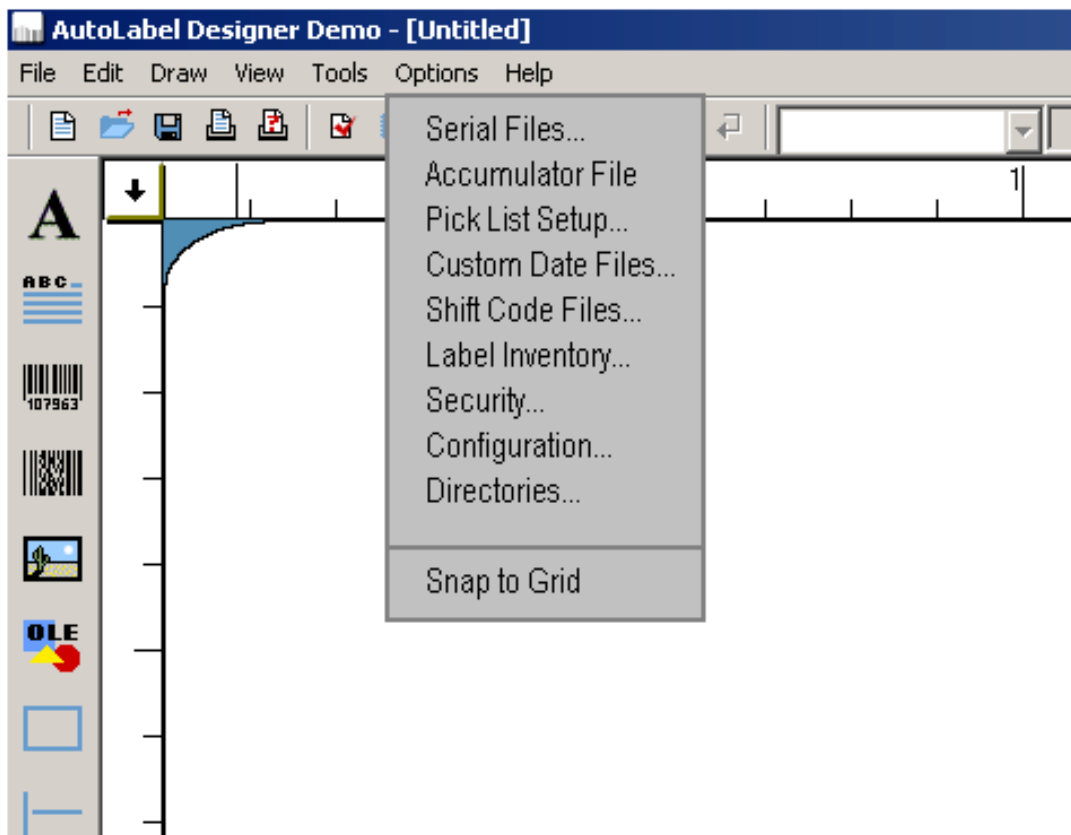
The systems that has the hardware key connected to it will have the **AP81000 LicMgr\_2007-06-04** program loaded on it.

The computers that do not have the hardware key loaded on it will have the **AP81000 HardKey\_2007-06-06** program loaded on them.

To select the networked computer for access to the key, follow the instructions below.

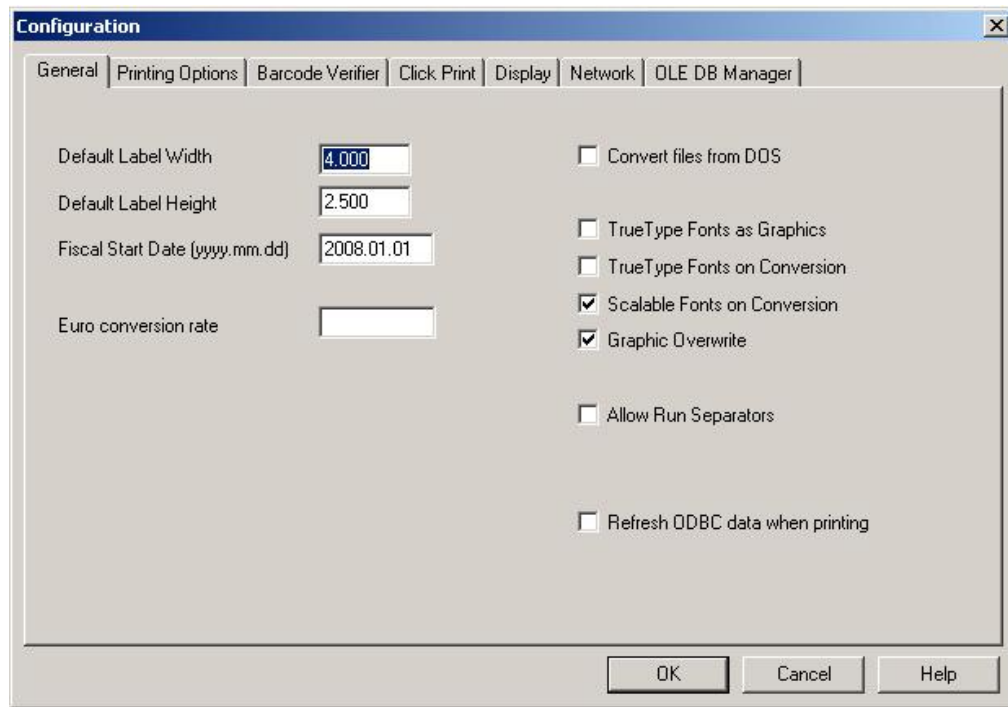
Start the Autolabel Designer 8 program from the Windows START menu, or from the Desktop icon.

Once the Autolabel Designer 8 program is running, click the OPTIONS menu. Select CONFIGURATION from the OPTIONS menu.



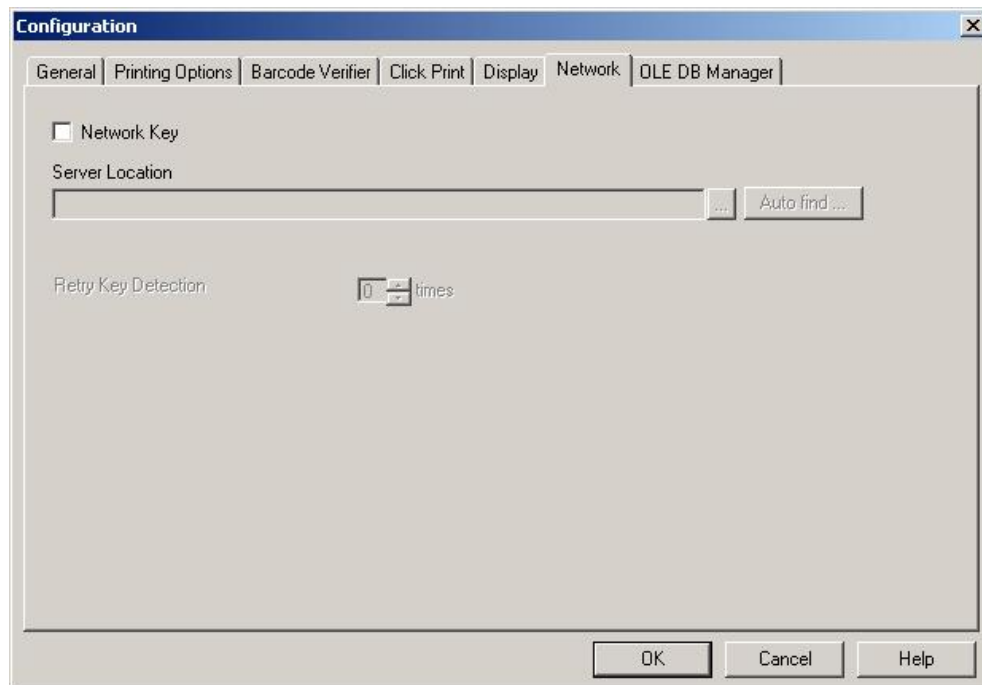
The following screen will appear.

Select the NETWORK tab.

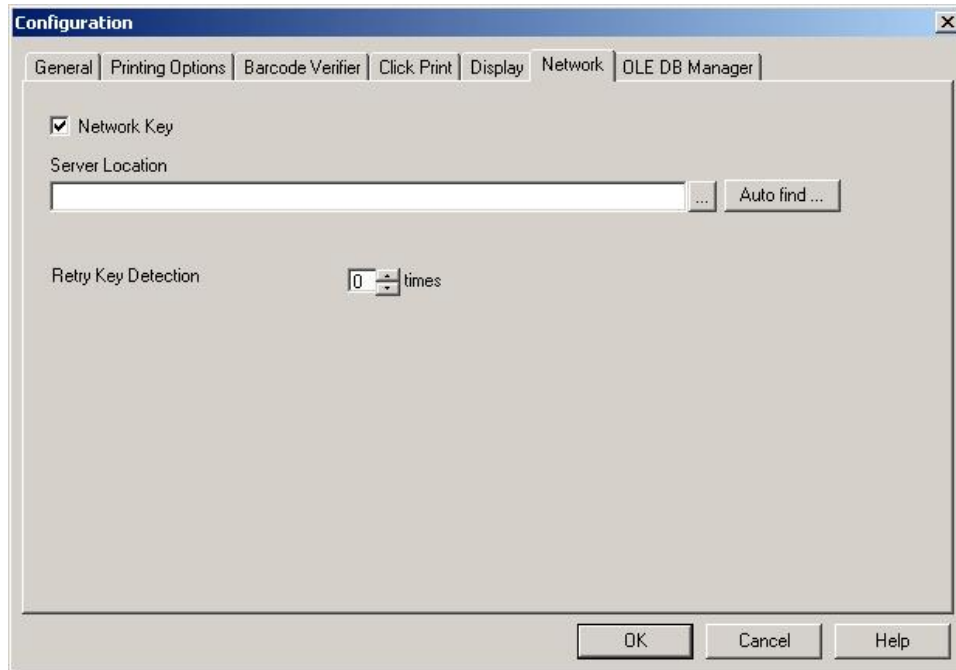


The Network Configuration Screen is shown below:

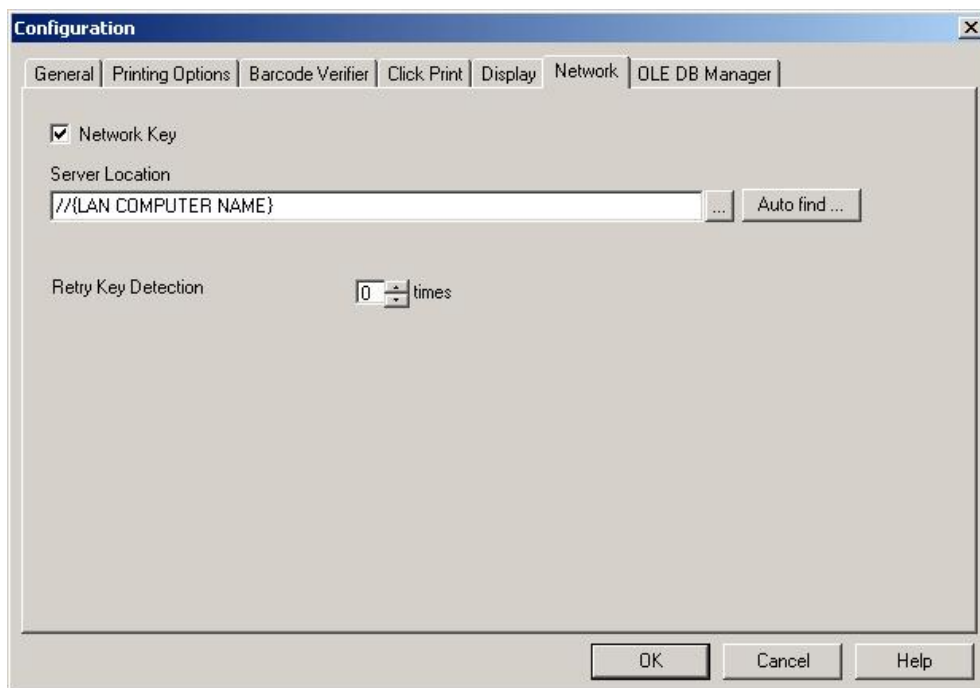
Select LEFT-CLICK on the Network Key box to select using a network key.



The screen will now appear like this.



Enter in the location on the network of the license server computer. This will be where the hardware key is located.



Care must be taken to enter the complete network path.

If you don't know the complete network path, you must consult your company's network administrator.